



Template 10: Sectoral Profiles and Key Success Factors

METAL PROCESSING INDUSTRY

This type of industry consists of those companies that deal with metal manufacture and processing which includes production of metal and metal products, production of machinery and tools and production of vehicles. The Bjelovar-Bilogora County does not have big metal industry producers any more, only small and medium-sized companies.

Metal industry of Bjelovar-Bilogora County has a significant place in the manufacturing industry as shown by the shares of certain economic categories. In the total number of manufacturing industry, metal industry companies participate with 25.7%; 20.5% refers to the number of employees; in total revenue in manufacturing industry metal industry participates with 20.8%.

Most of the products of the county's metal industry are equipment, cast goods, and finished products. The production equipment produced is most for the equipment of the brick factory, pasta, fruits and vegetable factory, and the beer brewery. The casting factory mostly makes parts for agricultural equipment and transport vehicles, mechanical machine elements, as well as sewage pipes and mechanical tools. Of the finished products produced in the county, the most significant are special forestry tractors, automobile and tractor-trailers, valves, and metal hardware.

The most significant representatives of the metal processing industry are:

“DALIT-CORP” JSC, DARUVAR – a company able to fulfil market demand with quality and technical standards; “ESCO” L.t.d. – spring and metal goods factory, Bjelovar; “LJEVAONICA BJELOVAR” L.t.d. – a company with 150 employees known for their reinforced and canalisation casting, with a wide range of goods; “HITTNER” L.t.d. Bjelovar – a company with 70 employees, and their main product is EKOTRAC – a forestry tractor”; “MPD” – pump factory L.t.d. Daruvar – a company established in 1960 with 90 employees, mostly technicians; and “METALPRODUKT” JSC, Šandrovac – production of steel wool, steel wool goods, galvanised steel and PVC household sponges.

Transport Network

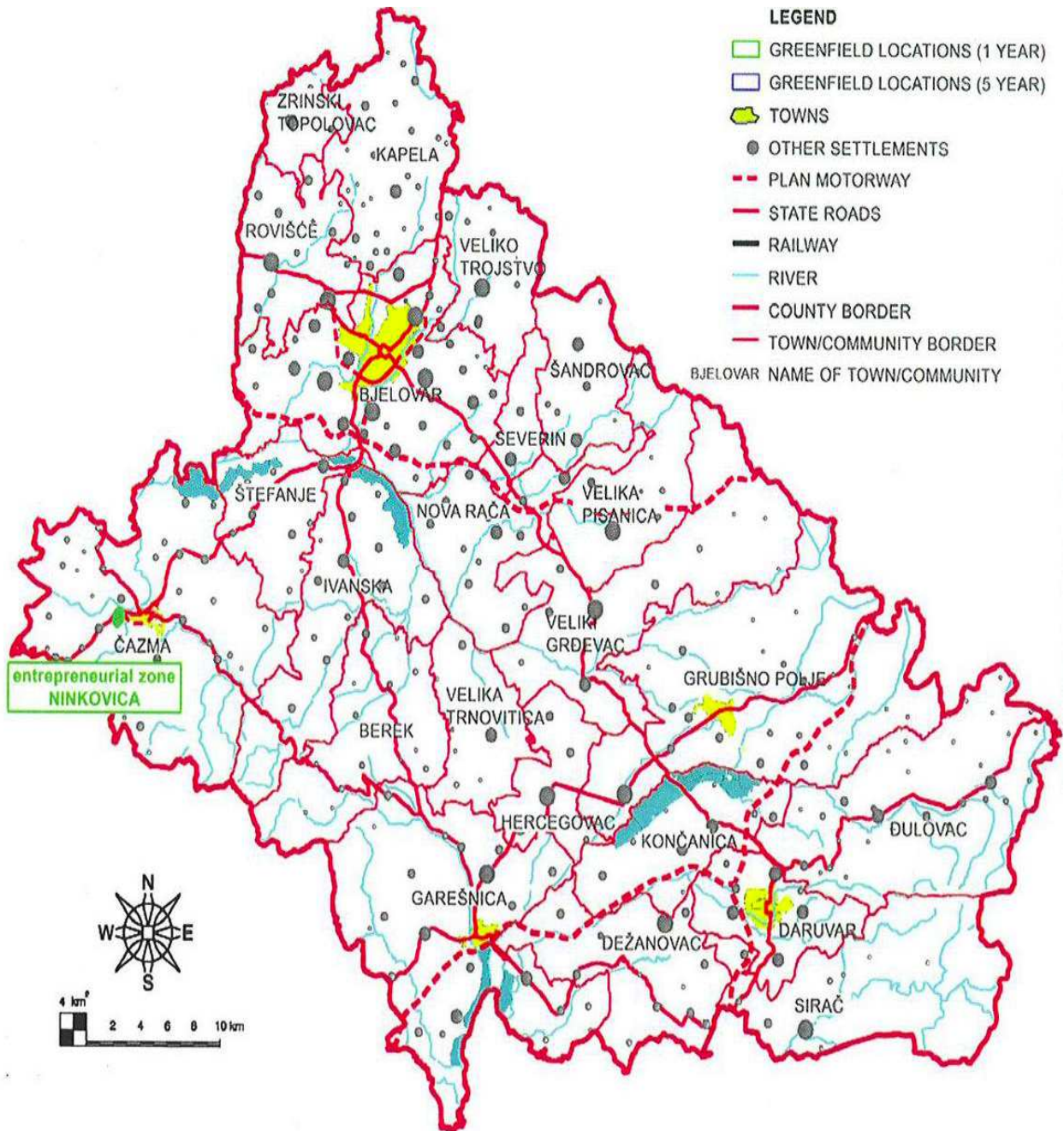


Favorable geographic position to: Hungary, Slovenia, Bosnia and Serbia.

BUSINESS ZONES- 1 YEAR

NAME	CITY/ MUNICIPALITY	TOTAL ha	FREE ha
BUSINESS ZONE "Štefanje"	Štefanje	26,00	24,80
BUSINESS ZONE "Ninkovica"	Čazma	10,80	2,40
SMALL AND MEDIUM ENTREPRENEURIAL "Zona II"	Grubišno Polje	9,00	4,00
ZONE "Novi Borik Lepirac"	Bjelovar	29,70	12,00
TOTAL			43,20 ha

- ✓ Purchasing completely formed and parceled land with access to road and all municipal infrastructures (water, gas, sewage, electricity, telecommunication infrastructure)
- ✓ Exemption from municipal utility fees for a period of 5 years
- ✓ Exemption from municipal contributions
- ✓ Exemption from taxes on utility connections (water, sewage)
- ✓ Free 25-40 kW connection for electrical energy
- ✓ Favorable price per square meter (Euro 3-5, what amounts to 12-20% of the actual value of the building land)

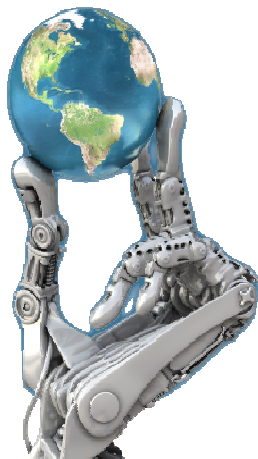




COUNTY EDUCATION

- ❑ Students have a choice of the following programs:
- ❑ Faculty of Economics Rijeka 3+2 year program);
- ❑ Faculty of Economics Zagreb- specialized course in business economics (two year program);
- ❑ Faculty of Mechatronics and Medical school (3 year program)
- ❑ Vocational training

FACULTY OF MECHATRONICS



- ❑ The students of faculty of Mechatronics receive a training for developing into independent, professional and skilled workers.
- ❑ At the moment 240 students attend this faculty
- ❑ After completing the program, there will be numerous positions available like: Industrial Maintenance and Facility Manager, Company representative for mechatronic devices, Organizer of the production process of mechatronic components

BJELOVAR-BILOGORA COUNTY

REASONS WHY TO INVEST IN OUR COUNTY

- ✓ Geographical position on important European corridors (highways, railroad, airports, nearness of ports Rijeka, Koper and Trieste)
- ✓ Nearness to Hungarian (around 50 km) and Slovenian (around 160 km) borders
- ✓ Good business and communal infrastructure
- ✓ Qualified, skilled and educated workforce
- ✓ Availability of construction sites and industrial zones
- ✓ Investment climate and incentive measures
- ✓ Quality of life